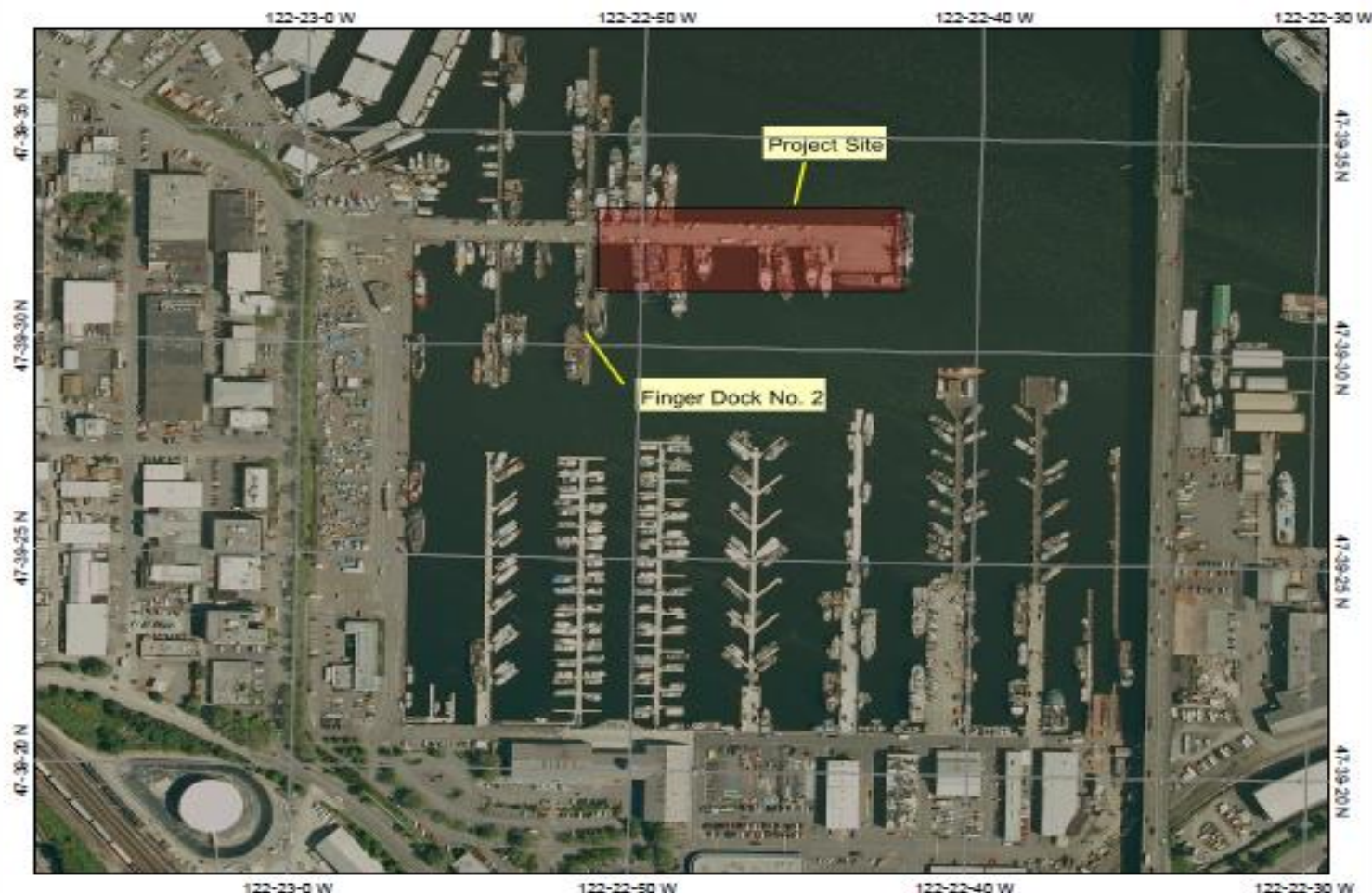


Fishermen's Terminal Northwest Dock East Fender Replacement

August 24, 2010 Port Commission Meeting

Fishermen's Terminal, Northwest Dock, East Section



Legend

2009 12-inch Color

0 125 250 375 m.

Map center: 47° 39' 27.5" N, 122° 22' 48.6" W



Scale: 1:4,305

This map is a user generated static output from an Internet mapping site and is for general reference only. Data layers that appear on this map may or may not be accurate, current, or otherwise reliable. THIS MAP IS NOT TO BE USED FOR NAVIGATION.



Fishermen's Terminal (east portion of NW Dock is shaded)



Fishermen's Terminal Northwest Dock



DESCRIPTION OF PILE: Decayed and split at top
LOCATION: Typical multiple locations



DESCRIPTION OF PILE: Crushed and decayed at top
LOCATION: Typical multiple locations